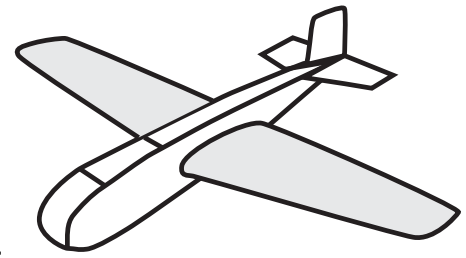
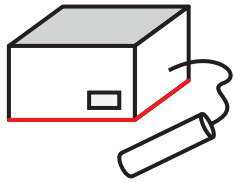


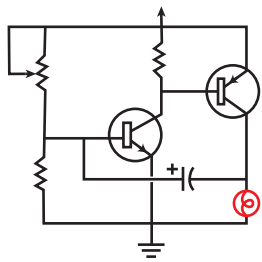
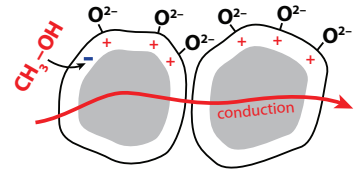
$$\begin{array}{r}
 1 \quad 1 \\
 1 \quad 0 \quad 1 = 5 \\
 + \quad 0 \quad 1 \quad 1 = 3 \\
 \hline
 1 \quad 0 \quad 0 \quad 0 = 8
 \end{array}$$



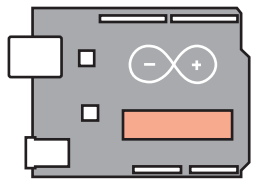
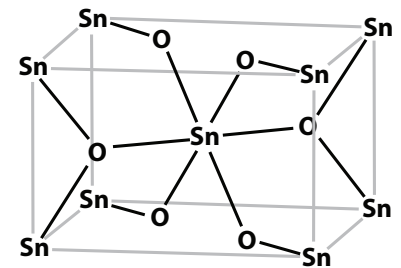
Community Science II



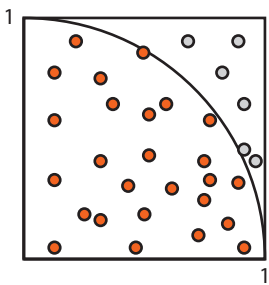
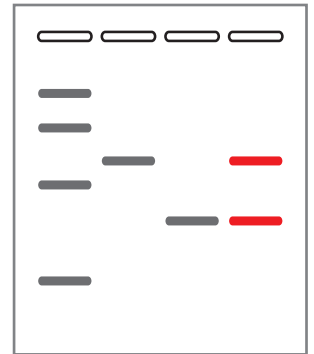
The Community Science Academy is offering a six-week summer enrichment program at the California Institute of Technology (Caltech) in Pasadena. More details at csa.caltech.edu, or via email at csa@caltech.edu.



We start on *Monday, June 19*, and meet every Monday, Wednesday, and Friday (with some exceptions) from 10 am to 3:30 pm. We conclude on July 28. Tuition is \$750, and several need-based scholarships are available.



CSA 2 is an engineering-oriented course that can only be taken by students who have completed CSA 1. CSA 2 covers topics in computer programming, electronics, aeronautics, and biotechnology:



Environmental monitoring. Build circuits, program microcontrollers, and link solid-state gas sensors to create devices that respond to adverse conditions.

Remote sensing. Design remote-controlled planes with attached multispectral sensors to study vegetation.

Bacterial detection. Amplify and separate DNA to detect the presence of different bacteria.

